



# FÉDÉRATION INTERNATIONALE DE PHILATÉLIE

## Commission for Maximaphily

CHAIRMAN: NICOS RANGOS

ELEFTHEROUPOLEOS 4, F6 ACROPOLIS

CY-2001 NICOSIA - CYPRUS

TEL: +357 99 63 91 81/FAX: +357 22 510 440

Email: dn1989@cytanet.com.cy

### 5<sup>TH</sup> WORLD BEST MAXIMUM CARD COMPETITION - BUCHAREST 26 JUNE, 2008

By Nicos Rangos,  
FIP Maximaphily Commission Chairman

During the FIP Maximaphily Commission Conference in Bucharest on June 26, 2008 the official delegates present were invited to vote, according to the regulations of the World Best Maximum Card competition, for the three best maximum cards created during the year 2007.

The following forty (42) countries took part in the competition:

Albania, Aland, Argentina, Armenia, Australia, Belgium, Brazil, Bulgaria, Canada, China (PR), Chinese Taipei, Cyprus, Czech Republic, Egypt, Finland, France, Germany, Greece, Hungary, India, Isle of Man, Israel, Italy, Luxembourg, Malaysia, Monaco, Nepal, Netherlands, Portugal, Romania, Russia, San Marino, Singapore, Slovakia, Slovenia, Spain, Switzerland, Thailand, Ukraine, United Kingdom and USA.

Italy	14 points	1st prize
Romania	11 points	2nd prize
Brazil	10 points	3rd prize
Luxemburg	10 points	3rd prize
Germany	9 points	
Spain	9 points	
Australia	8 points	
Canada	7 points	
Aland	6 points	
Cyprus	6 points	
Finland	6 points	
Taiwan	5 points	
All the other countries received less than 5 points		

\* \* \*



## First Prize to Italy

### “CUPID (EROS) AND PSYCHE”

This marvellous sculpture created by the Italian Antonio Canova (1757-1822) represents the moment of Greek Mythology at which Psyche is woken from her deathly sleep by the kiss of Eros. The dynamic sculpture conveys a deep sense of love, passion and energy as Eros sweeps from the sky to awaken Psyche from her slumber. Psyche throws up her arms elegantly to receive Eros' kiss.

Maximum card with an excellent concordance and lovely subject and message was created by Cezare Rialdi, President of the Italian Maximaphily Association.

\* \* \*



## Second Prize to Romania

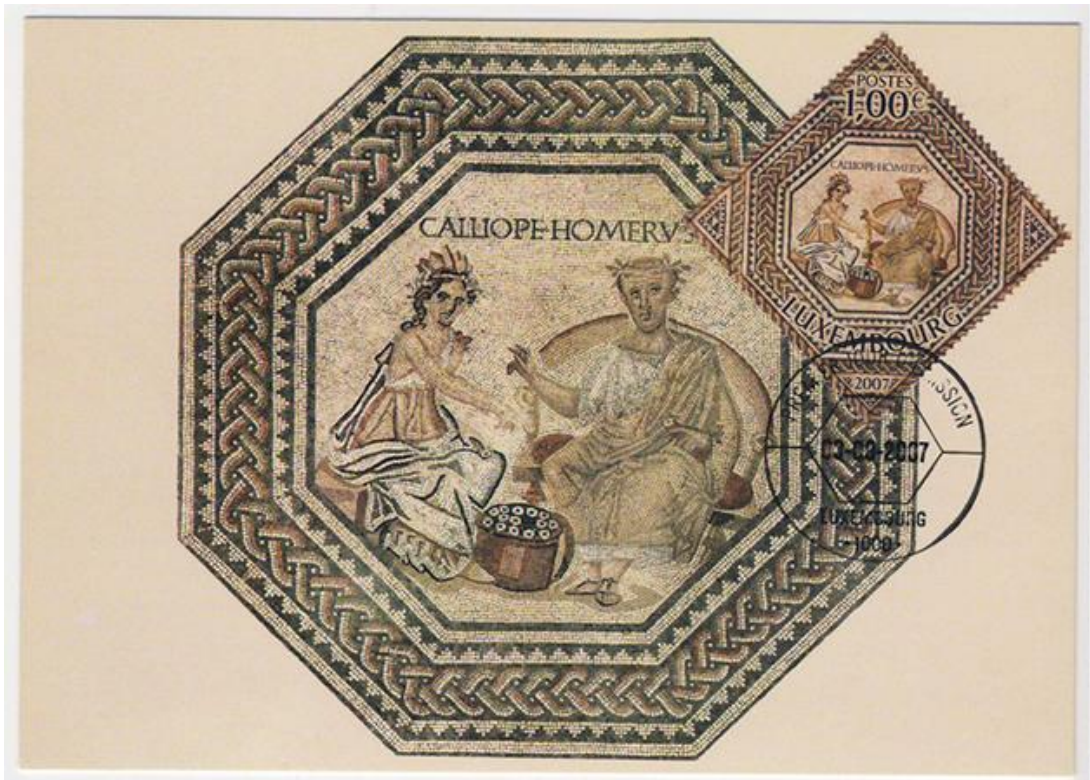
### 100 YEARS OF THE WORLD SCOUTS MOVEMENT

The Romania Scouts Association “Cercetaşii României” was officially established in 1915 and it is one of the 31 founding members of the World Organisation of Scouts Movement in 1922, having formally had Scouts since 1912. Having accepted the principles and values of the movement, Romanian Scouts were active and present during World War I offering all kinds of help to the war victims. They marched in the front of the Victory Train, under the Triumphal Arch in Bucharest. In 1920, 67 Romanian Boy Scouts and their leaders participated at the first World Jamboree in London. In 1930 the first Romanian Scout Jamboree took place when “Cercetaşii României” had 45,000 members. In 1936 the 2<sup>nd</sup> Romanian Scout Jamboree was organised at Brasov. After an interval of 45 years (1944-1989) “Cercetaşii României” was again established in 1991, and in 1993 gained recognition by the World Bureau of the WOSM.

Beautiful maximum card with an excellent visual concordance and a message containing many principles and values was created by the Romfilatelia to mark the 100 years of the World Scouts Movement.







Third Prize to Luxemburg

## CALLIOPE AND HOMER

Calliope, the muse of epic poetry, is seated beside the poet Homer and a box of scrolls. The two persons form the central decoration of a wider floor mosaic of the Imperial Roman period (240 AD), found at Vichten and depicting all nine muses who according to the Greek Mythology were the goddesses of music, song and dance, and the source of inspiration to poets. They were also goddesses of knowledge, who remembered all things that had come to pass. Later the Mousai were assigned specific artistic spheres: Calliope, epic poetry; Cleo, history; Ourania, astronomy; Thaleia, comedy; Melpomene, tragedy; Polyhymnia, religious hymns; Erato, erotic poetry; Euterpe, lyric poetry; and Terpsichore, choral song and dance. The above floor mosaic is now a part of a Collection in the National Museum of History and Art of the City of Luxemburg.

The maximum card with excellent concordance and with many fine cultural messages was created by the Maximaphily Commission of Luxemburg whose the president is Joseph Wolff, actually the FIP president.